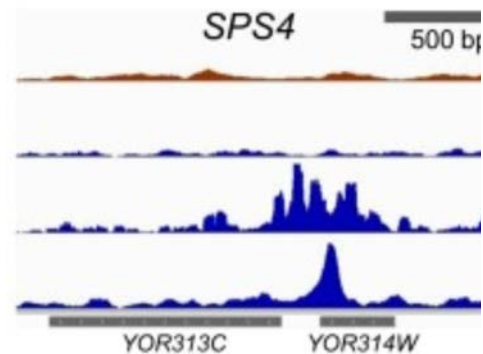
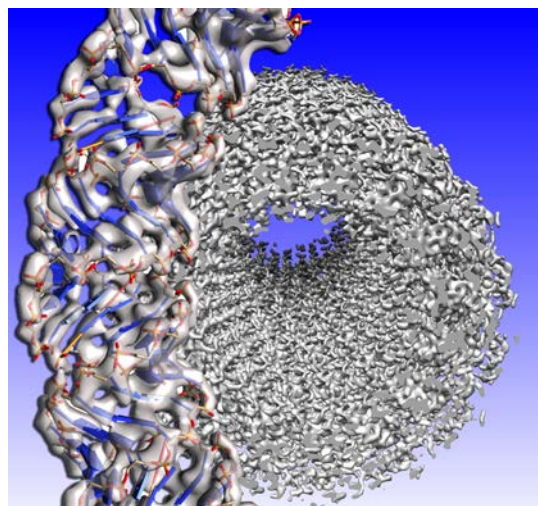
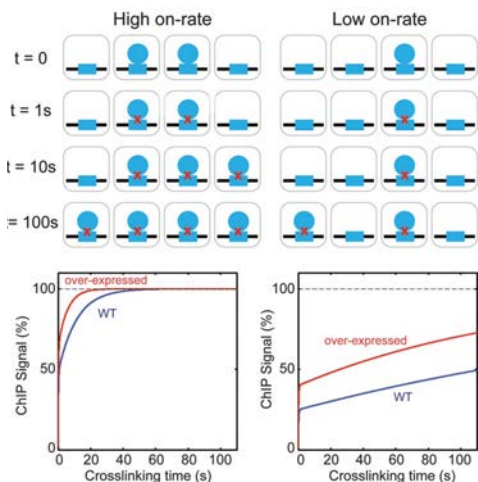


# University of Virginia School of Medicine

Department of

# Biochemistry & Molecular Genetics

*2014 Annual Retreat*



# Schedule of Events

---

8:30-9:15 a.m.	Breakfast	Servery
9:15 - 10:15	<b>Short Talks: Session 1</b>	Auditorium
10:15-11:15	<b>Poster Session A (even)</b> <i>- Coffee &amp; Snacks @ 10:30</i>	Auditorium Servery
11:15-12:15	<b>Short Talks: Session 2</b>	Auditorium
12:30-1:30	Lunch	Servery/Auditorium
1:30-2:30	<b>Short Talks: Session 3</b>	Auditorium
2:30-3:30	<b>Poster Session B (odd)</b>	Auditorium
3:30-3:45	<i>Afternoon Coffee &amp; Snacks</i>	Servery
3:45-4:45	<b>Afternoon Breakout Sessions</b>	<b>See below</b>
4:45-6:00	Reception, Entertainment and awards	Auditorium

# Short Talks

---

**9:15 - 10:15**

**Short Talks: Session 1**

**Auditorium**

Yuh-Hwa Wang

*Repeat Expansion Diseases*

Ryan Layer

*Exploring Genetic Variation and Genotypes Among Millions of Genomes*

Dan Foltz

*Centromere Licensing Through the Mis18 complex*

Etsuko Shibata

*CRL4Cdt2 E3 Ubiquitin Ligase and Proliferating Cell Nuclear Antigen (PCNA) Cooperate to Degrade Selected Proteins in S Phase*

**11:15-12:15**

**Short Talks: Session 2**

**Auditorium**

Mike McConnell

*Single Cell Genomics and Human Brain Mosaicism*

Sheena Clift

*Combinatorial treatment of three-dimensional pancreatic ductal adenocarcinoma cell cultures with MEK inhibitors and BET inhibitors induces BIM-mediated apoptosis*

Tarek Abbas

*CRL4-CDT2 ubiquitin ligase as a rationale therapeutic target in primary and metastatic melanoma*

Ron Taylor

*Back to the Future: On the Relationship Between Complement-Dependent Cytotoxicity (CDC) and Ca<sup>2+</sup> Fluxes in Cells*

**1:30-2:30**

**Short Talks: Session 3**

**Auditorium**

Stefan Bekiranov

*Measuring and Modeling TF-Chromatin and Chromatin-Chromatin Interaction Dynamics*

Anoush Anderson

*TGIF1 and TGIF2 as transcriptional regulators of ciliogenesis*

Anindya Dutta

*ASF1a and MCM9: a locus important for response to DNA damage or replication stress*

Steve Rich

*From GWAS to WGS in type 1 diabetes.*

## Breakout sessions

---

These sessions are contemporaneous. Please select a session to attend. The breakout sessions are intended to provide introductions to evolving techniques and/or foster discussion.

### **Session A:**

New Advances in Cryo-EM

Ed Egelman

Auditorium

### **Session B:**

A practical guide to CRISPR

Mazhar Adli

Breakout room

### **Session C:**

Grant Brewing Session

Todd Stukenberg

Breakout room